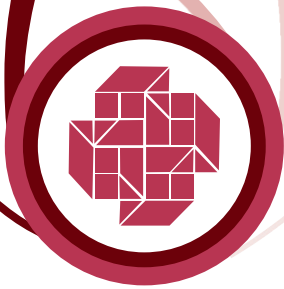


Engineering the milky way



SINCE 1972



Swastik

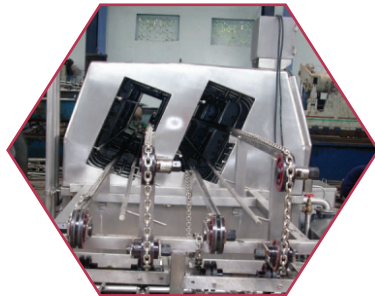


Swastik

Valves & Pumps



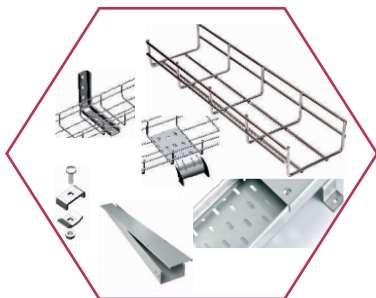
SWASTIK ENTERPRISES, (RAJAHUMNDRY)



SWASTIK VALVES & PUMPS, (PUNE)



SWASTIK ASSOCIATES (PUNE)



SWASTIK AGRO, (PUNE)



SWASTIK ENTERPRISES, A well established, reputed & well known Manufactures of Dairy Equipments and it's Allied Products in India, since last 35 years. Swastik is today successfully voyaging through the Dairy Equipments of the India and Overseas.. A Leading manufacturer of sophisticated equipments for the Dairy Industry, Swastik has always built the best machinery with the latest technology and has never cut corners where quality is concerned.

Swastik has over the past 3 decades, continued to be at the forefront in its field. The company has maintained an unwavering commitment to its customers by being proactive in supporting their needs and by providing quality individualized solutions according to their specific need. The company also maintains a rigorous quality assurance program along with R & D efforts in order to provide a cutting edge in the manufacture of Dairy Equipments.

Swastik Having vast experience in the field has ventured to promote an individual and independent Manufacturing Unit, especially and exclusively for manufacturing of SS Centrifugal Milk Pumps / Sanitary Valves & Fittings of Various Models / Sizes, by implementing latest developed technology and design with unique feature, ranging from 0.5 Hp to 10.0 HP to cater the needs of Dairy / Beverage / Chemical / Pharma & Food Processing Industries.

AN ISO 9001:2008 CERTIFIED COMPANY



PUMP PERFORMANCE GRAPH

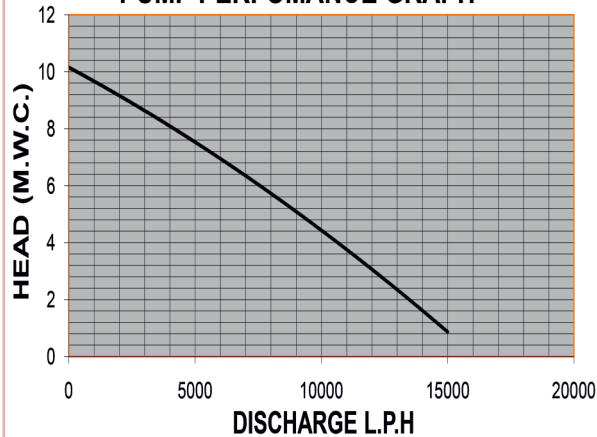


Fig.2: Performance Graph

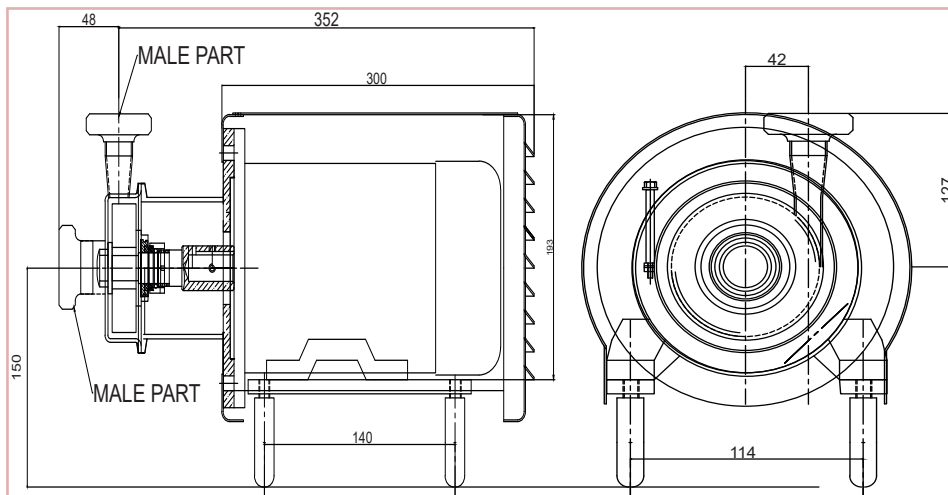


Fig.3: Pump Drawing

TECHNICAL DETAILS (0.5HP X 3PH)

Suction	: 38 MM (As Per Requirements)
Discharge	: 38 MM(As Per Requirements)
Connection type	: SMS Union / Tci And / Flange And
Product Wetted Parts MOC	: AISI 304/316
Other Parts MOC	: All Parts In SS 304
Seal Type	: Single Mechanical Shaft Seal
Seal Combinatin	: TC/TC/V, SIC/SIC/V, SS/C/V
Impeller Type	: Open Type (dynamically Balanced)
Motor Make	: Any Reputed
Motor Drive Detail	: 0.5 Hp (2900 Rpm)3 Phase / 1phase Foot Cum Flange Volt- 415 V / 230 V , Motor Insulation 'f' Class, Frequency 50 Hz, Ip-55
Pole	: 2 Poles
Finish	: Surface Polished 180 Grit
Mounting	: SS Leg With Adjustable Ball Feet With Ss Shroud



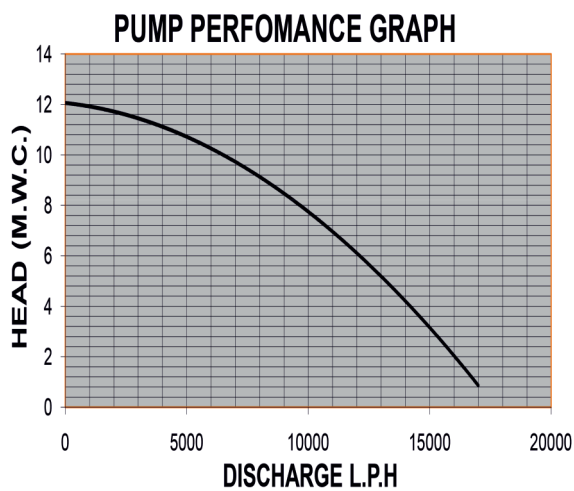


Fig.2: Performance Graph

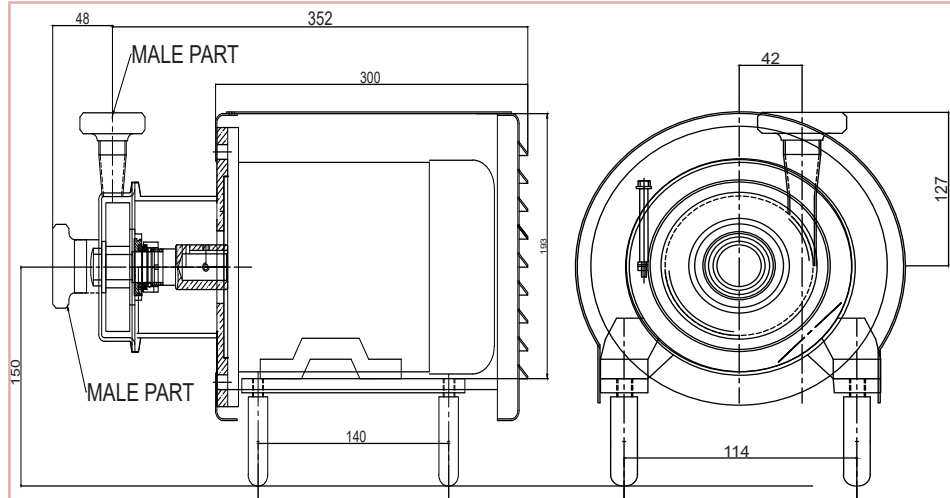


Fig.3: Pump Drawing

TECHNICAL DETAILS (1HP X 3PH)

Suction	: 38 MM (As Per Requirements)
Discharge	: 38 MM(As Per Requirements)
Connection type	: SMS Union / Tci And / Flange And
Product Wetted Parts MOC	: AISI 304/316
Other Parts MOC	: All Parts In SS 304
Seal Type	: Single Mechanical Shaft Seal
Seal Combinatin	: TC/TC/V, SIC/SIC/V, SS/C/V
Impeller Type	: Open Type (dynamically Balanced)
Motor Make	: Any Reputed
Motor Drive Detail	: 1 Hp (2900 Rpm)3 Phase / 1phase Foot Cum Flange Volt - 415 V / 230 V , Motor Insulation 'f' Class, Frequency 50 Hz, Ip-55
Pole	: 2 Poles
Finish	: Surface Polished 180 Grit
Mounting	: SS Leg With Adjustable Ball Feet With Ss Shroud



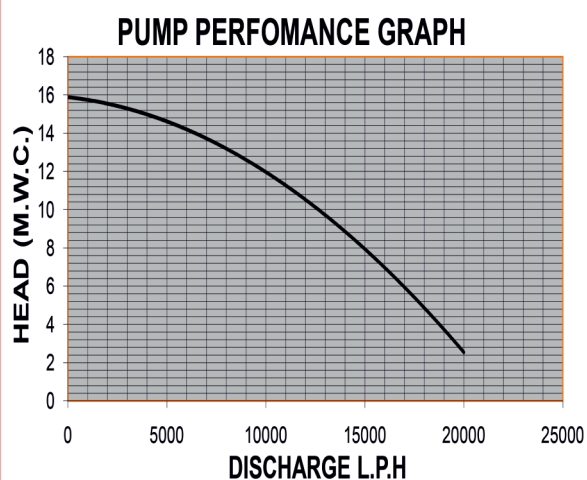


Fig.2: Performance Graph

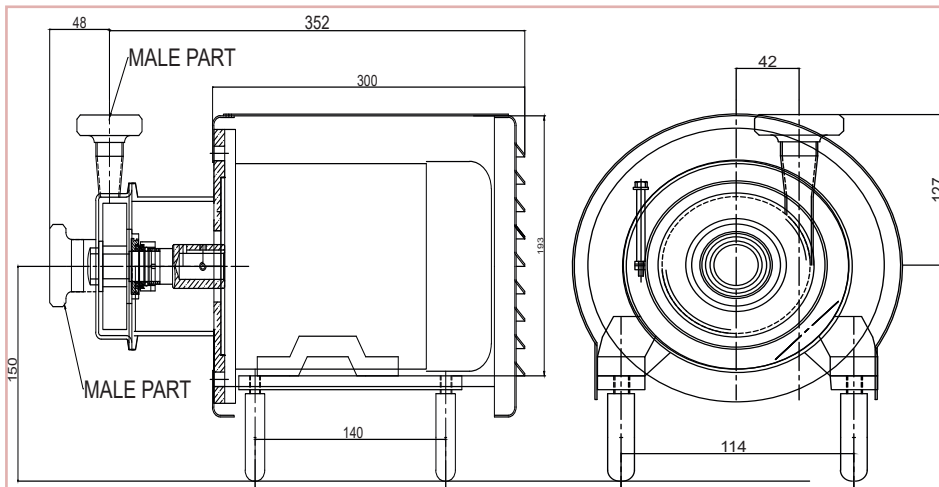


Fig.3: Pump Drawing

TECHNICAL DETAILS (1.5HP X 3PH)

Suction	: 38 MM (As Per Requirements)
Discharge	: 38 MM(As Per Requirements)
Connection type	: SMS Union / Tci And / Flange And
Product Wetted Parts MOC	: AISI 304/316
Other Parts MOC	: All Parts In SS 304
Seal Type	: Single Mechanical Shaft Seal
Seal Combinatin	: TC/TC/V, SIC/SIC/V, SS/C/V
Impeller Type	: Open Type (dynamically Balanced)
Motor Make	: Any Reputed
Motor Drive Detail	: 1.5 Hp (2900 Rpm)3 Phase / 1phase Foot Cum Flange Volt - 415 V / 230 V , Motor Insulation 'f' Class, Frequency 50 Hz, Ip-55
Pole	: 2 Poles
Finish	: Surface Polished 180 Grit
Mounting	: SS Leg With Adjustable Ball Feet With Ss Shroud





PUMP PERFORMANCE GRAPH

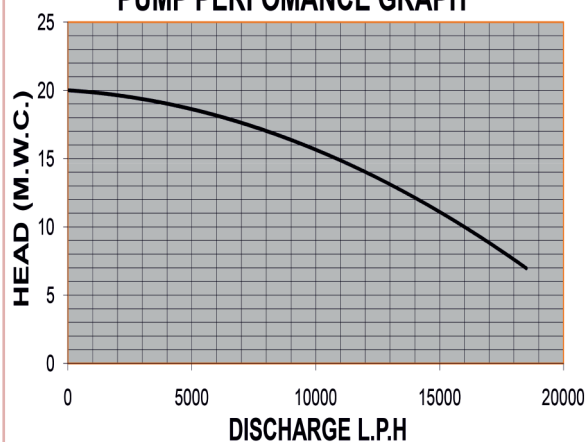


Fig 2: Performance Graph

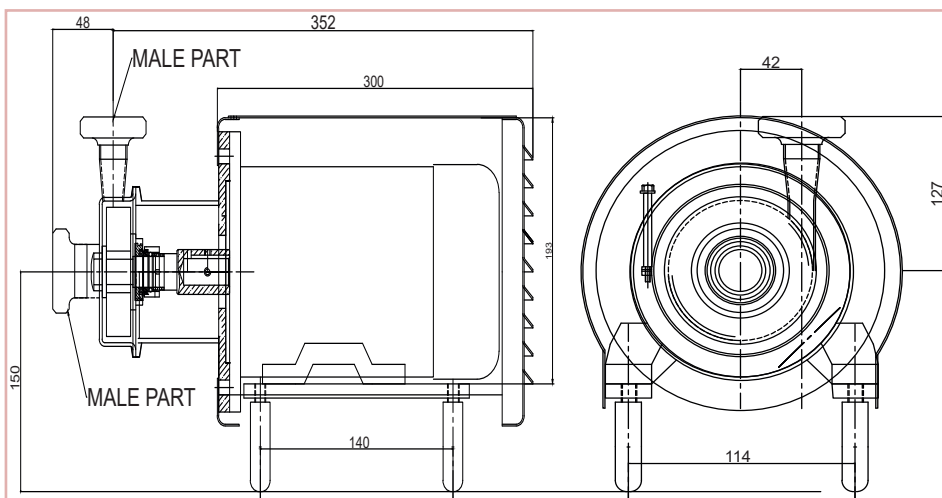


Fig.3: Pump Drawing

TECHNICAL DETAILS (2 HPX3PH)

Suction	: 51 MM (As Per Requirements)
Discharge	: 51 MM(As Per Requirements)
Connection type	: SMS Union / Tci And / Flange And
Product Wetted Parts MOC	: AISI 304/316
Other Parts MOC	: All Parts In SS 304
Seal Type	: Single Mechanical Shaft Seal
Seal Combinatin	: TC/TC/V, SIC/SIC/V, SS/C/V
Impeller Type	: Open Type (dynamically Balanced)
Motor Make	: Any Reputed
Motor Drive Detail	: 2 Hp (2900 Rpm)3 Phase Foot Cum Flange Volt 415 V , Motor Insulation 'f' Class, Frequency 50 Hz, Ip-55
Pole	: 2 Poles
Finish	: Surface Polished 180 Grit
Mounting	: SS Leg With Adjustable Ball Feet With Ss Shroud



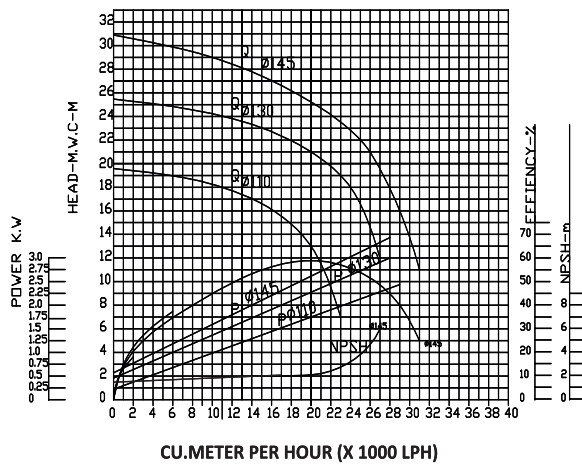


Fig.2: Performance Graph

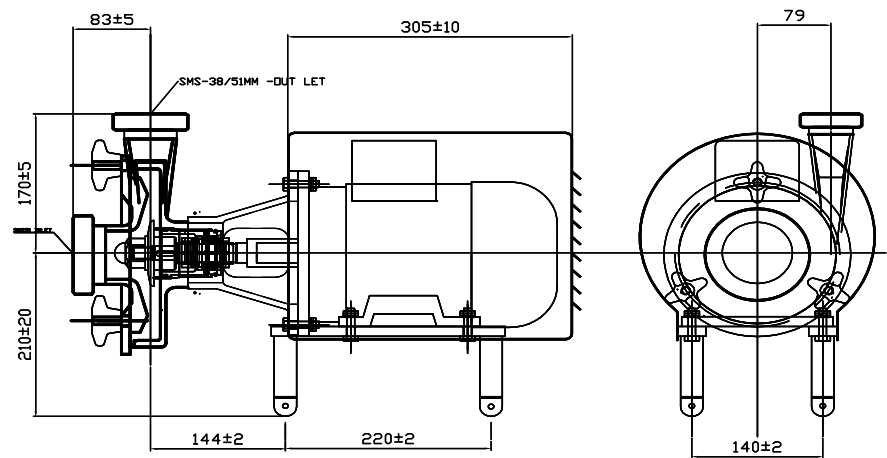


Fig.3: Pump Drawing

TECHNICAL DETAILS (3 HP X 3PH)

Suction	: 51 SMS (As Per Requirements)
Discharge	: 51 SMS (As Per Requirements)
Connection Type	: SMS Union/ TCL END/ Flange END
Product wetted parts MOC	: AISI 316
Other Parts MOC	: All Part In SS 304
Seal Type	: Single Mechanical Shaft Seal/ Double Mechanical Shaft Seal
Seal Combination	: TC/TC/V, SIC/SIC/V, SS/C/V
Impeller Type	: Open Type (Dynamically Balanced)
Motor Make	: Any Reputed
Motor Drive Details	: 3 HP (2900 RPM) 3 Phase, foot cum flange, volt 415 \pm 10% Motor Insulation 'F' Class, Frequency 50Hz, IP-55
Pole	: 2 Poles
Finish	: Product Contact Surface Polished 180 Grit
Mounting	: SS Leg With Adjustable ball feet with SS Shroud



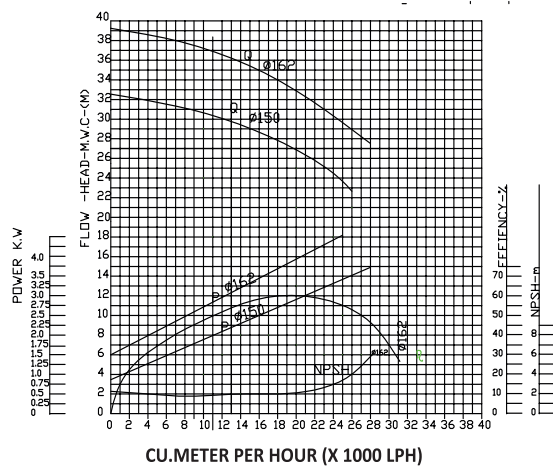


Fig.2: Performance Graph

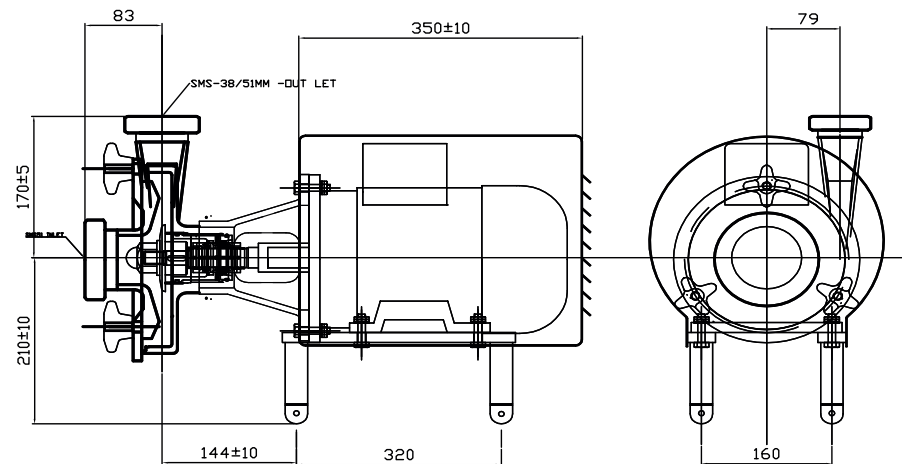
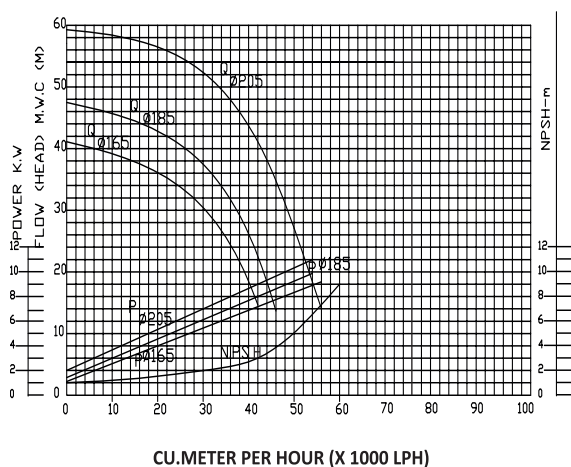


Fig.3: Pump Drawing

TECHNICAL DETAILS (5 HP X 3PH)

Suction	: 51 SMS (As Per Requirements)
Discharge	: 51 SMS (As Per Requirements)
Connection Type	: SMS Union/ TCL END/ Flange END
Product wetted parts MOC	: AISI 316
Other Parts MOC	: All Part In SS 304
Seal Type	: Single Mechanical Shaft Seal/ Double Mechanical Shaft Seal
Seal Combination	: TC/TC/V, SIC/SIC/V, SS/C/V
Impeller Type	: Open Type (Dynamically Balanced)
Motor Make	: Any Reputed
Motor Drive Details	: 5 HP (2900 RPM) 3 Phase, foot cum flange, volt 415 \pm 10% Motor Insulation 'F' Class, Frequency 50Hz, IP-55
Pole	: 2 Poles
Finish	: Product Contact Surface Polished 180 Grit
Mounting	: SS Leg With Adjustable ball feet with SS Shroud





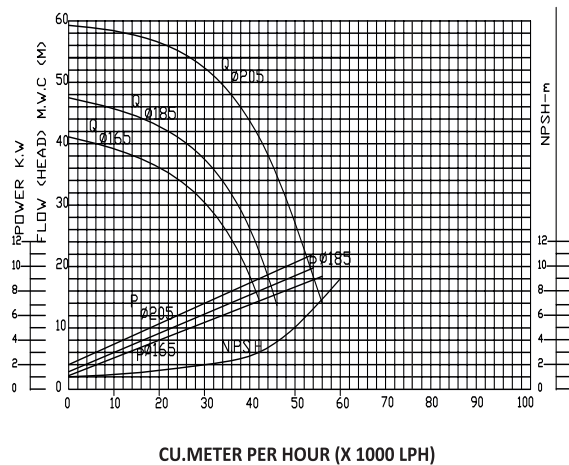


Fig.2: Performance Graph

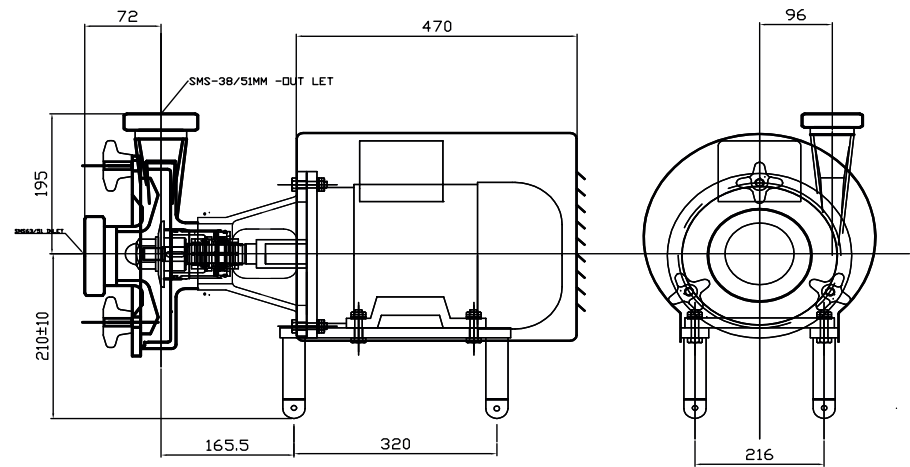


Fig.3: Pump Drawing

TECHNICAL DETAILS (10 HP X 3PH)

Suction	: 63 SMS (As Per Requirements)
Discharge	: 63 SMS (As Per Requirements)
Connection Type	: SMS Union/ TCL END/ Flange END
Product wetted parts MOC	: AISI 316
Other Parts MOC	: All Part In SS 304
Seal Type	: Single Mechanical Shaft Seal/ Double Mechanical Shaft Seal
Seal Combination	: TC/TC/V, SIC/SIC/V, SS/C/V
Impeller Type	: Open Type (Dynamically Balanced)
Motor Make	: Any Reputed
Motor Drive Details	: 10 HP (2900 RPM) 3 Phase, foot cum flange, volt 415 + 10% Motor Insulation 'F' Class, Frequency 50Hz, IP-55
Pole	: 2 Poles
Finish	: Product Contact Surface Polished 180 Grit
Mounting	: SS Leg With Adjustable ball feet with SS Shroud



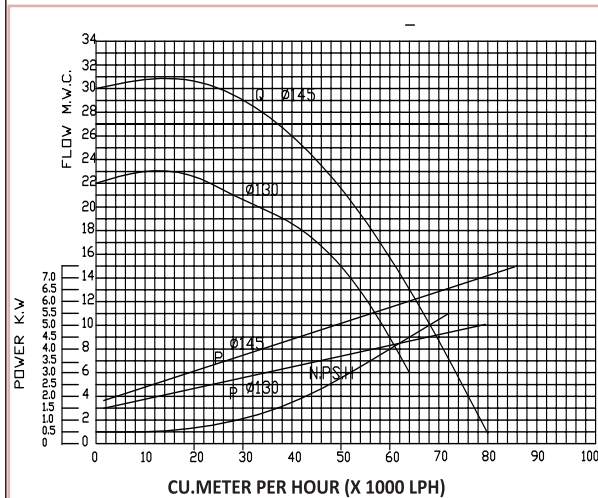


Fig.2: Performance Graph

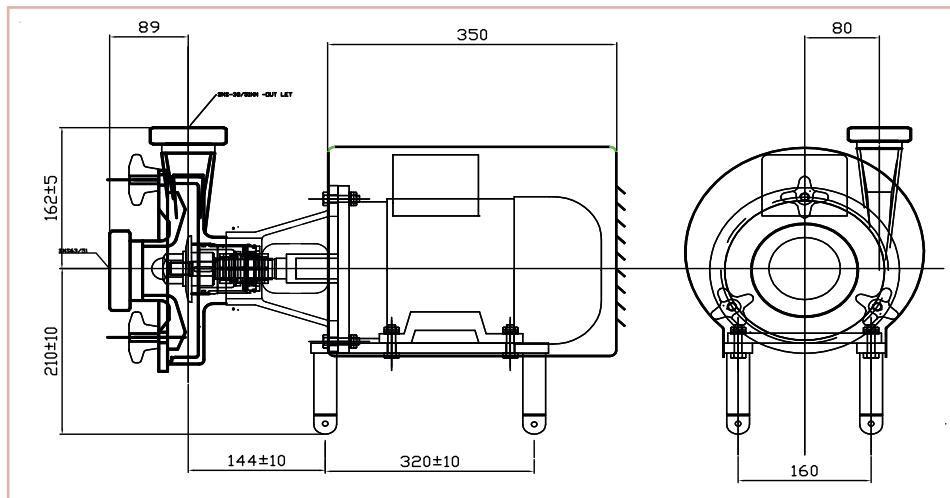


Fig.3: Pump Drawing

TECHNICAL DETAILS (3HP X 3PH)

Suction	: 51 SMS (As Per Requirements)
Discharge	: 51 SMS (As Per Requirements)
Connection Type	: SMS Union/ Tci End/ Flange End
Product wetted parts MOC	: AISI 316
Other Parts MOC	: All Part In SS 304
Seal Type	: Single Mechanical Shaft Seal/ Double Mechanical Shaft Seal
Seal Combination	: TC/TC/V, SIC/SIC/V, SS/C/V
Impeller Type	: Open Type (Dynamically Balanced)
Motor Make	: Any Reputed
Motor Drive Details	: 3 HP (2900 RPM) Phase, foot cum flange, volt 415 ± 10% Motor Insulation 'F' Class, Frequency 50Hz, IP-55
Pole	: 2 Poles
Finish	: Product Contact Surface Polished 180 Grit
Mounting	: SS Leg With Adjustable ball feet with SS Shroud



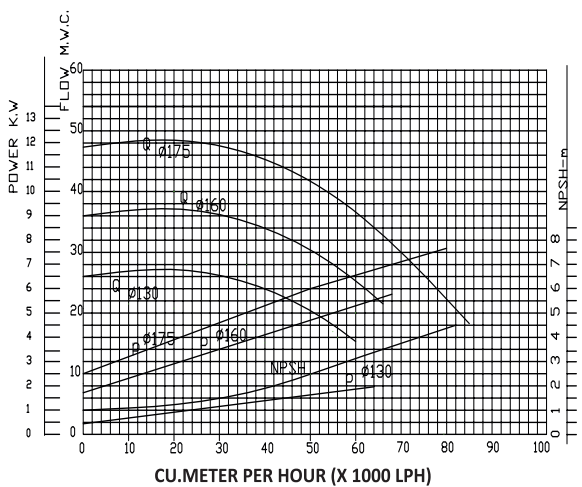


Fig.2: Performance Graph

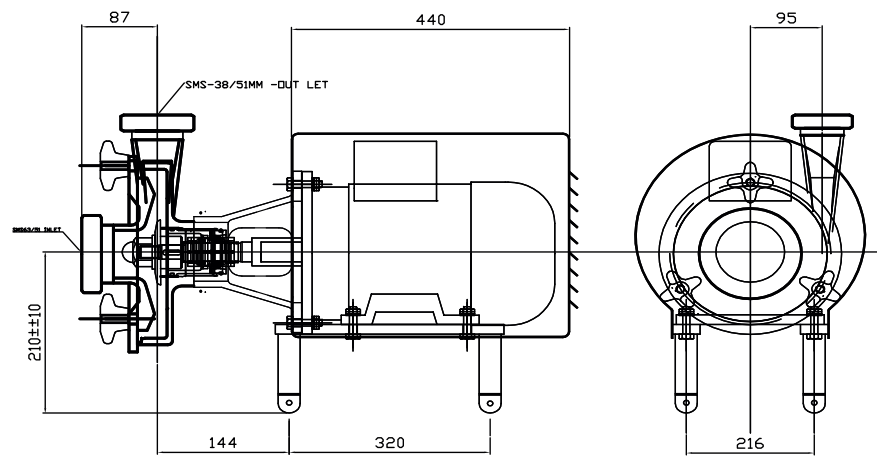


Fig.3: Pump Drawing

TECHNICAL DETAILS (5 HP X 3PH)

Suction	: 51 SMS (As Per Requirements)
Discharge	: 51 SMS (As Per Requirements)
Connection Type	: SMS Union/ Tcl End/ Flange End
Product wetted parts MOC	: AISI 316
Other Parts MOC	: All Part In SS 304
Seal Type	: Single Mechanical Shaft Seal/ Double Mechanical Shaft Seal
Seal Combination	: TC/TC/V, SIC/SIC/V, SS/C/V
Impeller Type	: Open Type (Dynamically Balanced)
Motor Make	: Any Reputed
Motor Drive Details	: 5 HP (2900 RPM) 3 Phase, foot cum flange, volt 415 + 10% Motor Insulation 'F' Class, Frequency 50Hz, IP-55
Pole	: 2 Poles
Finish	: Product Contact Surface Polished 180 Grit
Mounting	: SS Leg With Adjustable ball feet with SS Shroud



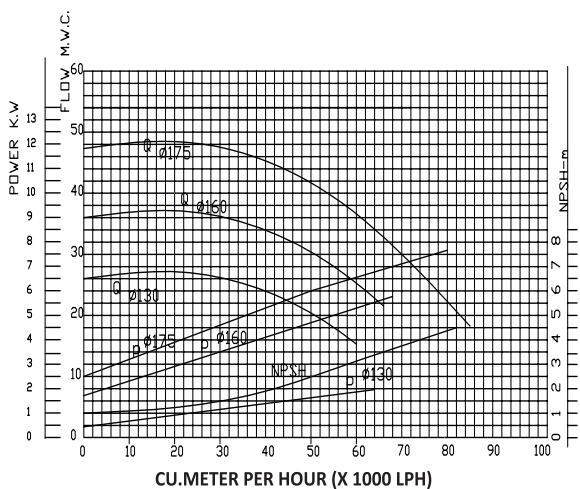


Fig.2: Performance Graph

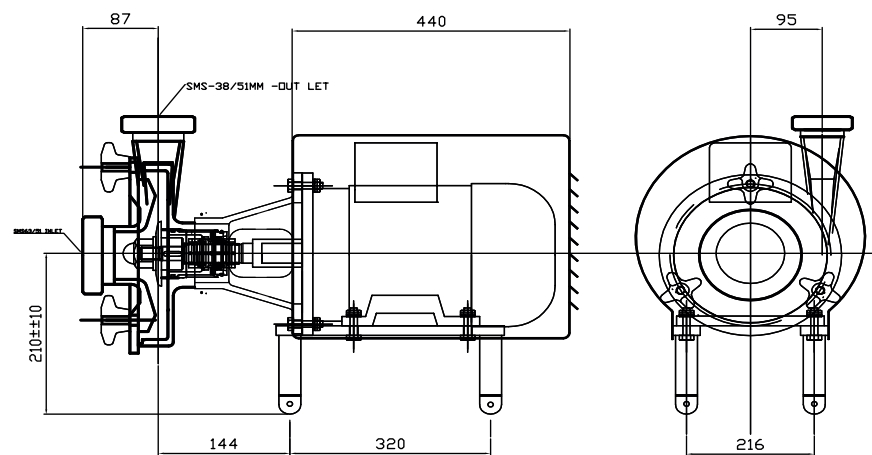


Fig.3: Pump Drawing

TECHNICAL DETAILS (7.5 HP X 3PH)

Suction	: 63 SMS (As Per Requirements)
Discharge	: 63 SMS (As Per Requirements)
Connection Type	: SMS Union/ Tci End/ Flange End
Product wetted parts MOC	: AISI 316
Other Parts MOC	: All Part In SS 304
Seal Type	: Single Mechanical Shaft Seal/ Double Mechanical Shaft Seal
Seal Combination	: TC/TC/V, SIC/SIC/V, SS/C/V
Impeller Type	: Open Type (Dynamically Balanced)
Motor Make	: Any Reputed
Motor Drive Details	: 7.5 HP (2900 RPM) 3 Phase, foot cum flange, volt 415 + 10% Motor Insulation 'F' Class, Frequency 50Hz, IP-55
Pole	: 2 Poles
Finish	: Product Contact Surface Polished 180 Grit
Mounting	: SS Leg With Adjustable ball feet with SS Shroud



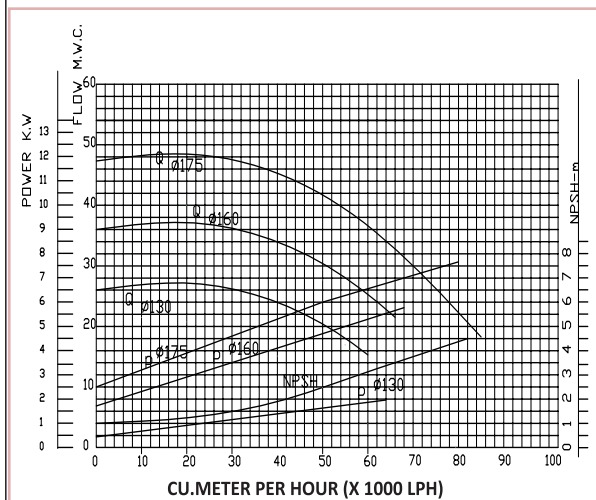
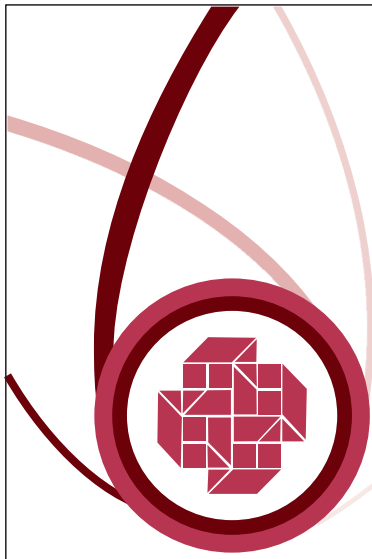


Fig.2: Performance Graph

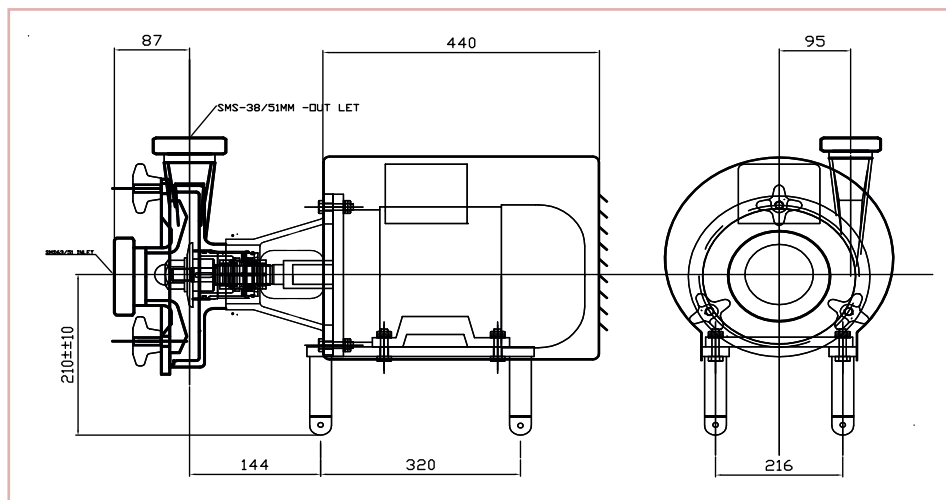


Fig.3: Pump Drawing

TECHNICAL DETAILS (10 HP X 3PH)

Suction	: 63 SMS (As Per Requirements)
Discharge	: 63 SMS (As Per Requirements)
Connection Type	: SMS Union/ Tci End/ Flange End
Product wetted parts MOC	: AISI 316
Other Parts MOC	: All Part In SS 304
Seal Type	: Single Mechanical Shaft Seal/ Double Mechanical Shaft Seal
Seal Combination	: TC/TC/V, SIC/SIC/V, SS/C/V
Impeller Type	: Open Type (Dynamically Balanced)
Motor Make	: Any Reputed
Motor Drive Details	: 10 HP (2900 RPM) 3 Phase, foot cum flange, volt 415 + 10% Motor Insulation 'F' Class, Frequency 50Hz, IP-55
Pole	: 2 Poles
Finish	: Product Contact Surface Polished 180 Grit
Mounting	: SS Leg With Adjustable ball feet with SS Shroud



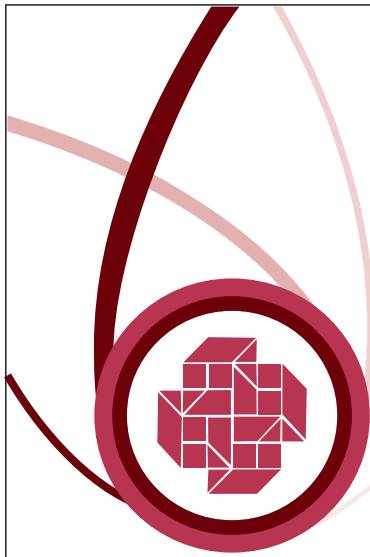


Fig.2:half shear Impeller

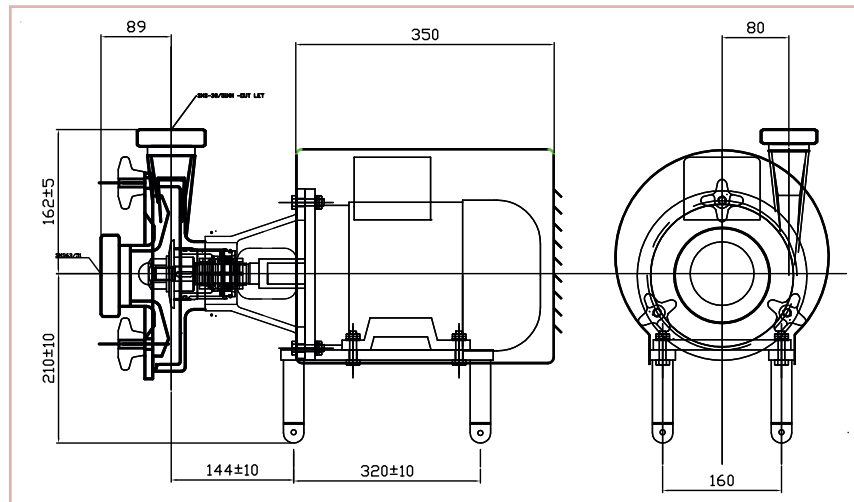


Fig.3: Pump Drawing

TECHNICAL DETAILS (3 HP X3PH SHEAR PUMP)

Suction	: 51 SMS (As Per Requirements)
Discharge	: 51 SMS (As Per Requirements)
Connection Type	: SMS Union/ Tcl End/ Flange End
Product wetted parts MOC	: AISI 316
Other Parts MOC	: All Part In SS 304
Seal Type	: Single Mechanical Shaft Seal/ Double Mechanical Shaft Seal
Seal Combination	: TC/TC/V, SIC/SIC/V, SS/C/V
Impeller Type	: Open Type (Dynamically Balanced)
Motor Make	: Any Reputed
Motor Drive Details	: 3 HP (2900 RPM) 3 Phase, foot cum flange, volt 415 \pm 10% Motor Insulation 'F' Class, Frequency 50Hz, IP-55
Pole	: 2 Poles
Finish	: Product Contact Surface Polished 180 Grit
Mounting	: SS Leg With Adjustable ball feet with SS Shroud

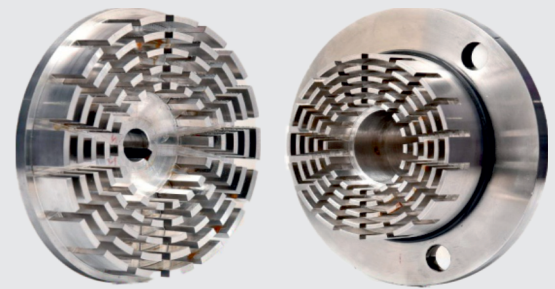




Fig.2:half shear Impeller

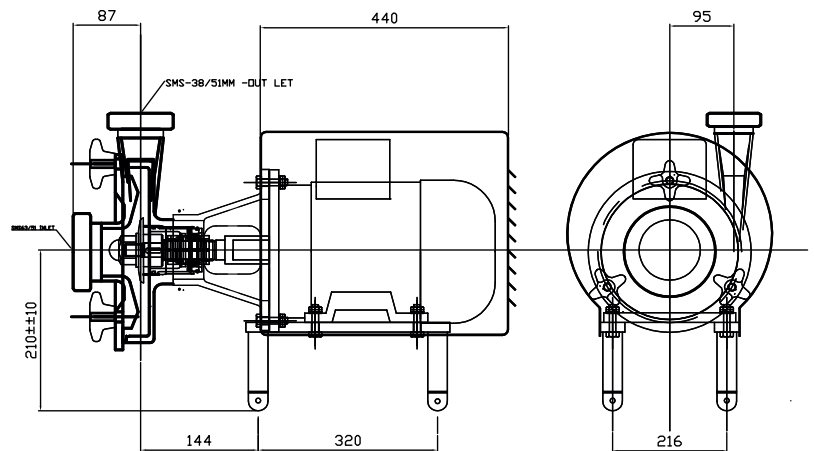
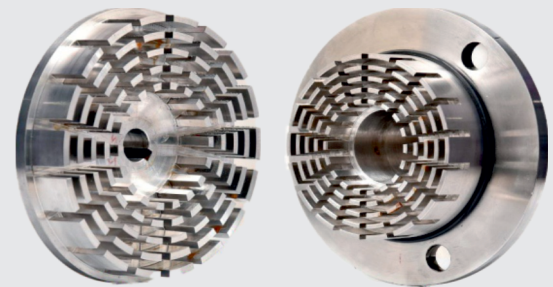


Fig.3: Pump Drawing

TECHNICAL DETAILS (5 HPX3PH SHEAR PUMP)

Suction	: 51 SMS (As Per Requirements)
Discharge	: 51 SMS (As Per Requirements)
Connection Type	: SMS Union/ Tci End/ Flange End
Product wetted parts MOC	: AISI 316
Other Parts MOC	: All Part In SS 304
Seal Type	: Single Mechanical Shaft Seal/ Double Mechanical Shaft Seal
Seal Combination	: TC/TC/V, SIC/SIC/V, SS/C/V
Impeller Type	: Open Type (Dynamically Balanced)
Motor Make	: Any Reputed
Motor Drive Details	: 5 HP (2900 RPM) 3 Phase, foot cum flange, volt 415 + 10% Motor Insulation 'F' Class, Frequency 50Hz, IP-55
Pole	: 2 Poles
Finish	: Product Contact Surface Polished 180 Grit
Mounting	: SS Leg With Adjustable ball feet with SS Shroud



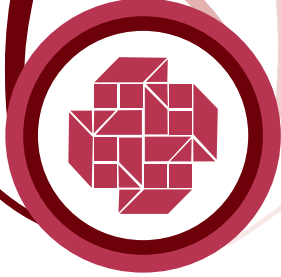


Fig.2:half shear Impeller

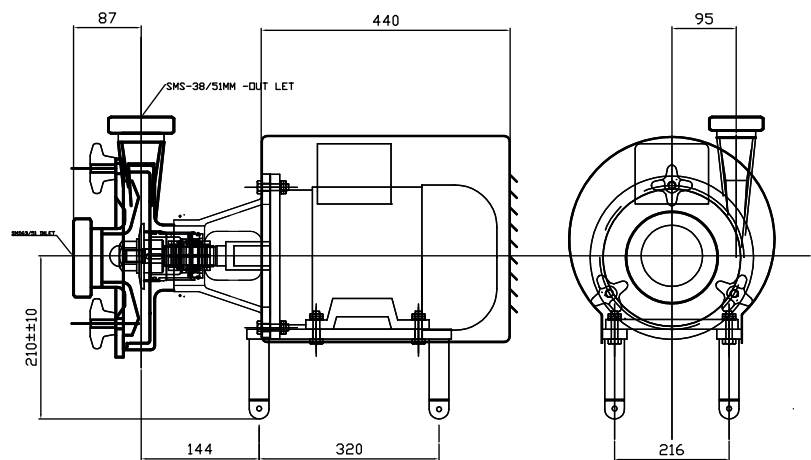
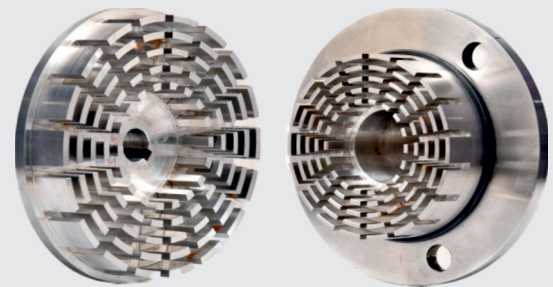


Fig.3: Pump Drawing

TECHNICAL DETAILS (7.5 HPX3PH SHEAR PUMP)

Suction	: 63 SMS (As Per Requirements)
Discharge	: 63 SMS (As Per Requirements)
Connection Type	: SMS Union/ Tcl End/ Flange End
Product wetted parts MOC	: AISI 316
Other Parts MOC	: All Part In SS 304
Seal Type	: Single Mechanical Shaft Seal/ Double Mechanical Shaft Seal
Seal Combination	: TC/TC/V, SIC/SIC/V, SS/C/V
Impeller Type	: Open Type (Dynamically Balanced)
Motor Make	: Any Reputed
Motor Drive Details	: 7.5 HP (2900 RPM) 3 Phase, foot cum flange, volt 415 + 10% Motor Insulation 'F' Class, Frequency 50Hz, IP-55
Pole	: 2 Poles
Finish	: Product Contact Surface Polished 180 Grit
Mounting	: SS Leg With Adjustable ball feet with SS Shroud



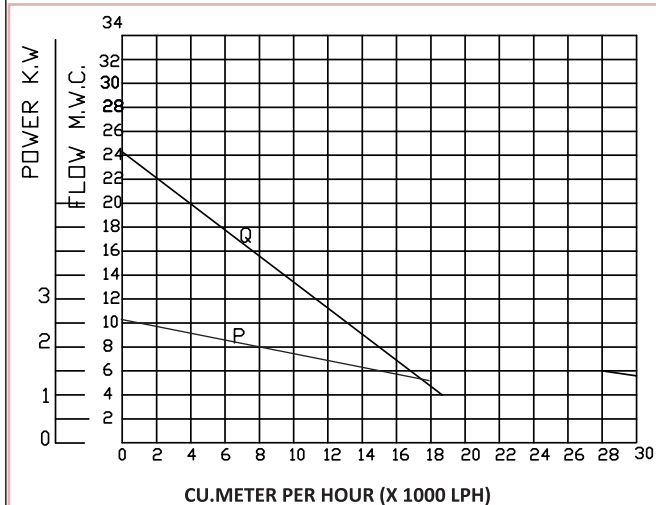


Fig.2: Performance Graph

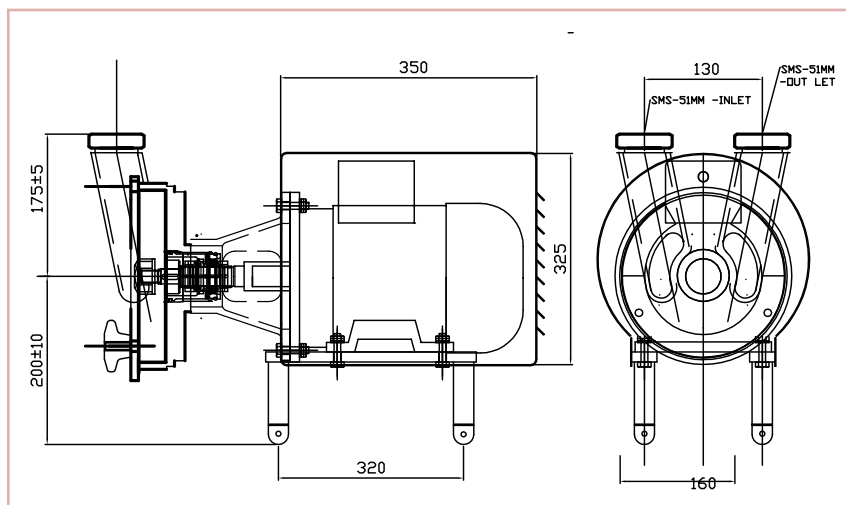
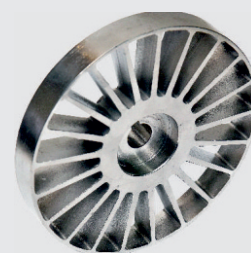


Fig.3: Pump Drawing

TECHNICAL DETAILS (5 HP X 3PH)

Suction	: 51 SMS (As Per Requirements)
Discharge	: 51 SMS (As Per Requirements)
Connection Type	: SMS Union/ TCL END/ Flange END
Product wetted parts MOC	: AISI 316
Other Parts MOC	: All Part In SS 304
Seal Type	: Single Mechanical Shaft Seal/ Double Mechanical Shaft Seal
Seal Combination	: TC/TC/V, SIC/SIC/V, SS/C/V
Impeller Type	: Semi Open Spider Vane Impeller
Motor Make	: Any Reputed
Motor Drive Details	: 5 HP (1450 RPM) 3 Phase, foot cum flange, volt 415 \pm 10% Motor Insulation 'F' Class, Frequency 50Hz, IP-55
Pole	: 4 Poles
Finish	: Product Contact Surface Polished 180 Grit
Mounting	: SS Leg With Adjustable ball feet with SS Shroud



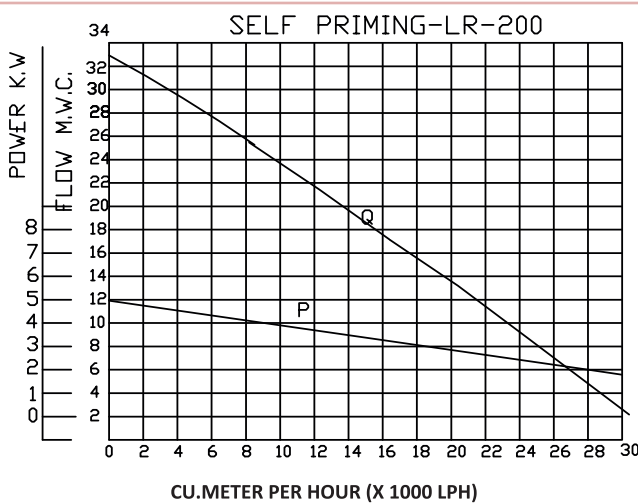


Fig.2: Performance Graph

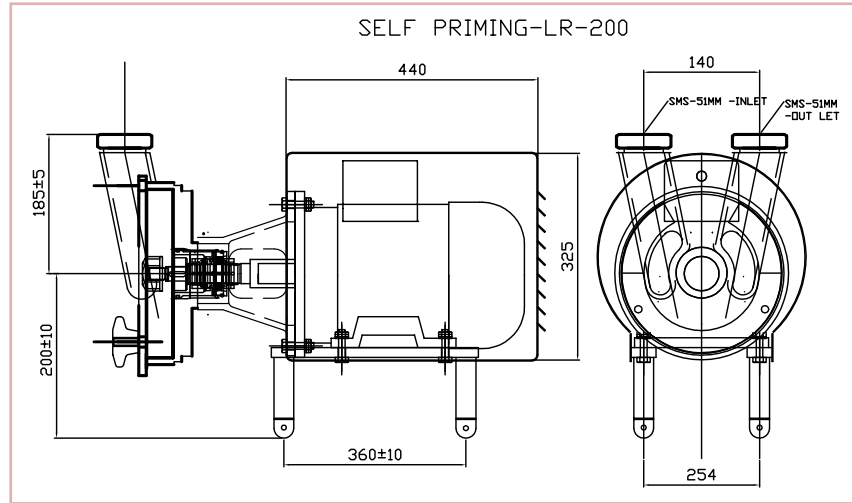


Fig.3: Pump Drawing

TECHNICAL DETAILS (7.5 HP X 3PH)

Suction	: 51 SMS (As Per Requirements)
Discharge	: 51 SMS (As Per Requirements)
Connection Type	: SMS Union/ TCL END/ Flange END
Product wetted parts MOC	: AISI 316
Other Parts MOC	: All Part In SS 304
Seal Type	: Single Mechanical Shaft Seal/ Double Mechanical Shaft Seal
Seal Combination	: TC/TC/V, SIC/SIC/V, SS/C/V
Impeller Type	: Semi Open Spider Vane Impeller
Motor Make	: Any Reputed
Motor Drive Details	: 7.5 HP (1450 RPM) 3 Phase, foot cum flange, volt 415 + 10% Motor Insulation 'F' Class, Frequency 50Hz, IP-55
Pole	: 4 Poles
Finish	: Product Contact Surface Polished 180 Grit
Mounting	: SS Leg With Adjustable ball feet with SS Shroud



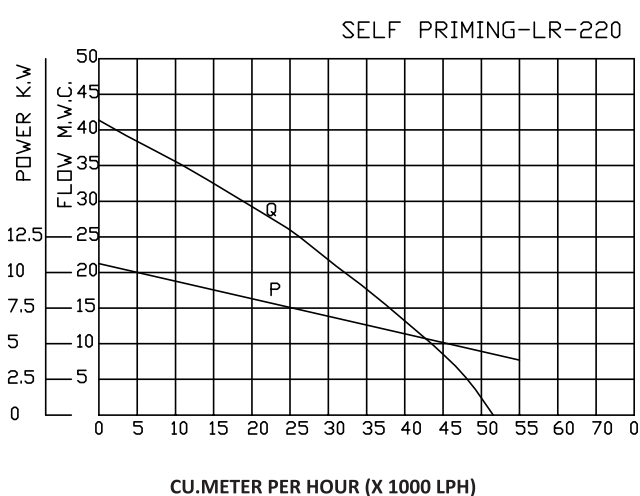


Fig.2: Performance Graph

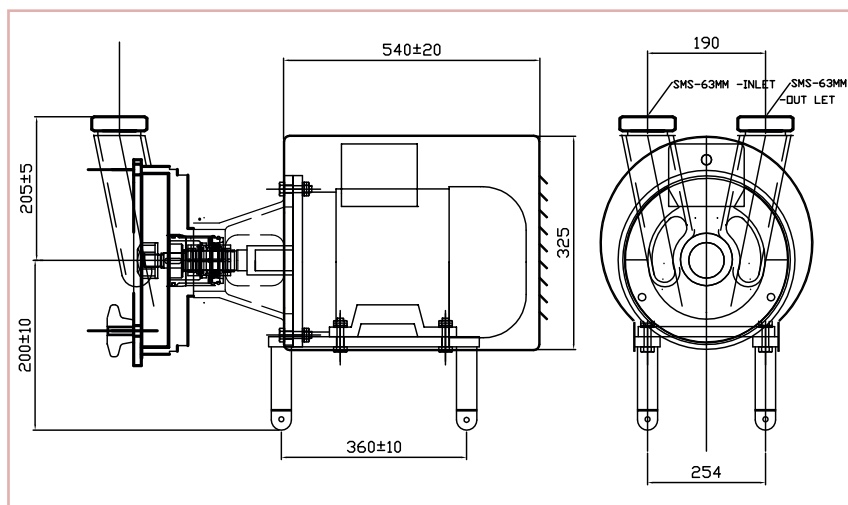


Fig.3: Pump Drawing

TECHNICAL DETAILS (10 HP X 3 PH)

Suction	: 63 SMS (As Per Requirements)
Discharge	: 63 SMS (As Per Requirements)
Connection Type	: SMS Union/ TCL END/ Flange END
Product wetted parts MOC	: AISI 316
Other Parts MOC	: All Part In SS 304
Seal Type	: Single Mechanical Shaft Seal/ Double Mechanical Shaft Seal
Seal Combination	: TC/TC/V, SIC/SIC/V, SS/C/V
Impeller Type	: Semi Open Spider Vane Impeller
Motor Make	: Any Reputed
Motor Drive Details	: 10 HP (1450 RPM) 3 Phase, foot cum flange, volt 415 + 10% Motor Insulation 'F' Class, Frequency 50Hz, IP-55
Pole	: 4 Poles
Finish	: Product Contact Surface Polished 180 Grit
Mounting	: SS Leg With Adjustable ball feet with SS Shroud



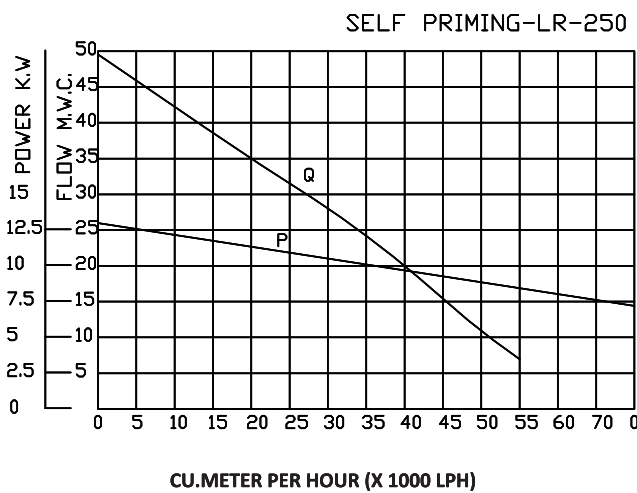


Fig.2: Performance Graph

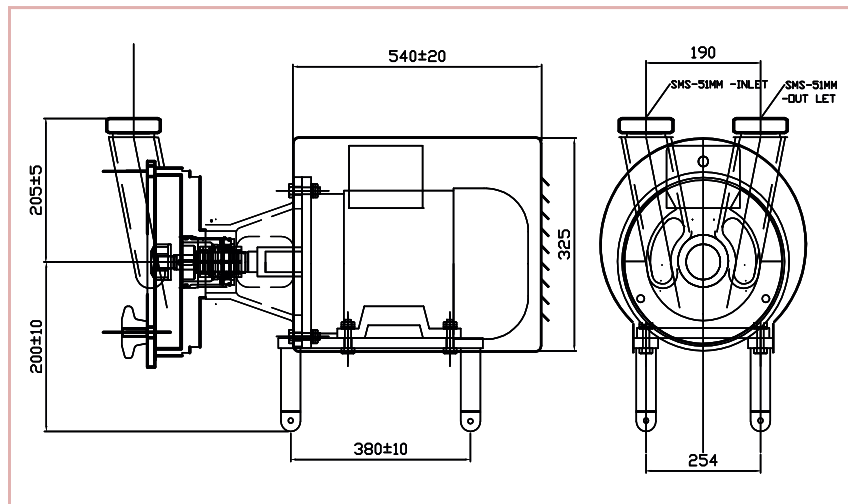


Fig.3: Pump Drawing

TECHNICAL DETAILS (15 HP X 3PH)

Suction	: 63 SMS (As Per Requirements)
Discharge	: 63 SMS (As Per Requirements)
Connection Type	: SMS Union/ TCL END/ Flange END
Product wetted parts MOC	: AISI 316
Other Parts MOC	: All Part In SS 304
Seal Type	: Single Mechanical Shaft Seal/ Double Mechanical Shaft Seal
Seal Combination	: TC/TC/V, SIC/SIC/V, SS/C/V
Impeller Type	: Semi Open Spider Vane Impeller
Motor Make	: Any Reputed
Motor Drive Details	: 15 HP (1450 RPM) 3 Phase, foot cum flange, volt 415 ₋ + 10% Motor Insulation 'F' Class, Frequency 50Hz, IP-55
Pole	: 4 Poles
Finish	: Product Contact Surface Polished 180 Grit
Mounting	: SS Leg With Adjustable ball feet with SS Shroud





Pump Specifications

Pump Type	: Svp - 20 (2 Hp)
Impeller	: Ø103 Mm
Type Of Impeller	: Open Impeller
Suction	: 38 Mm
Discharge	: 38 Mm
Frame Size	: 300x350x700 Mm
Pump Type	: T - 20 (2.0 Hp)
Impeller	: Ø120 Mm
Type Of Impeller	: Open Impeller
Suction	: 38 Mm
Discharge	: 38 Mm
Frame Size	: 300x350x700 M
Honda Engine	: GK- 100 / GX- 160



The engine pump is compactly designed by extending the ss shaft with complete alignment to facilitate draining

Swastik valves & pump pune . introduces new product in the market known as mobile pump the engine pump is compactly designed by extending the ss shaft with complete alignment to facilitate draining any leakage through packing arranged for minimum friction and perfect sealing the pump has been coupled with engine duly provided with stainless steel trolley with support.

The main feature of this pump is the mobility , it can be carried any where and can be operated easily. the material construction is of stainless steel 316 g makes the pump more suitable for food pharmaceutical , cosmetic , breweries and milk dairies.

These pumps meets the demands and uncompromised requirement in hygienic to ensure the gentle product treatment , these pumps have low noise , simple , efficient and economic design and easy to maintain , these pumps can be run by kerosene or diesel and are available in three models.

Engine Specifications

Engine Type	: Side Valve, 4 Stroke, Air Cooled, Horizontal shaft, Single Cylinder
Displacement	: 7 CC
Bore X Stroke	: 52 x 46 mm
Compression Ratio	: 4.8:1.0
Fuel	: Petrol Start & Kerosene Run
Max. Horse Power	: 1.8Hp (1.3Kw)/4200RPM
Rated Horse Power	: 1.4Hp (1.03Kw)/3600 RPM
Max. Torque	: 0.4 Kg.m./3000RPM



Technical Details

■ INTEGRATED SYSTEM

Swastik's powder mixer incorporates the uniform powder induction of the self priming pump and thorough blending of the shear blender into a single, compact system.

■ CONSISTENT POWER INDUCTION

The self priming pump is unparalleled and easily pulling liquids and solids together the table's full -port valve inducts powders fully, eliminates powder bridging and ensures maximum powder induction suction or repeatable results.

■ BLENDS BETTER

Using an intermeshed rotor /stator system tight gaps at high speeds and high turbulence the powder mixer achieves a complete and consistent mixer, After time.

■ PROCESSES LARGER BATCHES

Since the swastik powder mixer is an in-line system, the batch size is infinity.

■ BLENDS IN MINUTES

Powder can be wetted and dispersed on the first pass through the powder mixer, dramatically reducing process times.

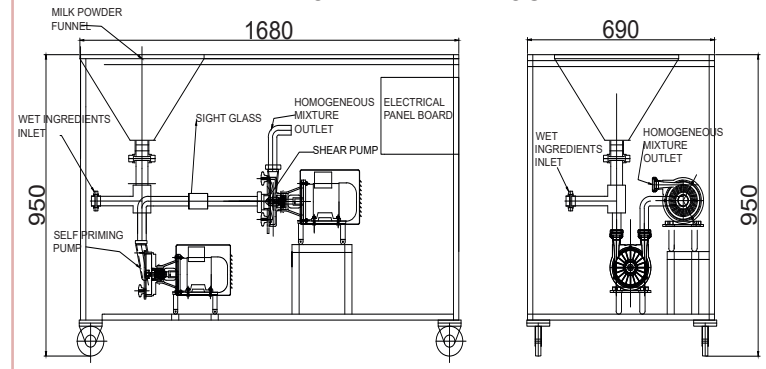
■ PORTABLE

Smaller model are portable, with locking wheels. The powder mixer can be moved easily to different processes as needed.

■ ERGONOMICS & SAFE

The powder mixer operates at floor-level, eliminating dangerous ladder climbing or a accidental falling or dropping of equipment from mezzanines. Also, with it's weight-height funnel top, there is no bending to porous.

POWDER MIX LAYOUT



Technical Parameters

Model	kg/ hr	Self priming pump	Shear pump	(Rpm)
svp-165	500-1000	5 HP	3 hp	2800
svp-180	1500-2000	7.5 HP	5 hp	2800

■ WHY IT'S BETTER THAN BATCH MIXERS

- Devours lumps and clumps
- Blends in minutes
- Processes larger batches

■ WHY IT'S BETTER THAN FUNNEL /PUMP COMBINATIONS

- High -intensity blending
- Repeatable product consistency

■ NO RISK TRIAL

Swastik offers on -site trials with your product. For only a nominal fee, swastik will put our powder mixer to work for you, so you can see the amazing results for yourself.

- Fully operational powder mixer
- Factory - trained technician on -site
- Expert process guidance

◆ TYPICAL APPLICATIONS

■ DAIRY

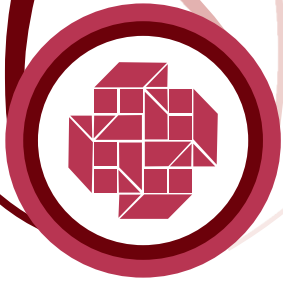
- Flavoured milk
- Ice cream mix

■ BEVERAGE

- Humus
- Salsa & conditioner
- Sanitizer gel

■ FOOD

- Soda syrups
- Sucrose solution
- Green tea



SHEAR PUMP



2 HP CENTRUFUGAL



CENTRIFUGAL PUMP



SELF PRIMING PUMP



LOBE PUMP

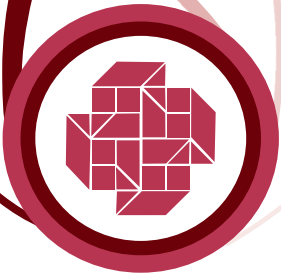


MOBILE PUMP



POWDER BLENDER





MIXING PROOF VALVE



BFV ACTUATOR



BUTTERFLY VALVE



BFV WITH ACTUATOR



PIPE & PIPE FILTER



PLUG VALVE



NON-RETURN VALVE (NRV)



SS FITTING



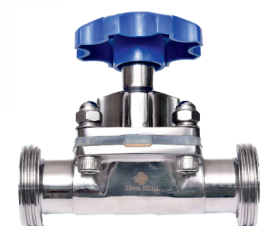
UNIONS



DISC TYPE FILTER



DIAPHRAGM VALVE





98-18-50, Morampudi Junction,
Rajahmundry - 533 103. (A.P.) INDIA.
Ph. : + 91 - 883 - 2463658
Fax: 0883 - 2463659 , (M) + 91 94401 76475
Email : swastik0008@gmail.com
swastik_entp1@rediffmail.com



**AN ISO 9001:2008
CERTIFIED COMPANY**

S. No. 28/27, Near Pari Company,
Dhayari - Narhe Road, Pune - 411 041.
Ph. : + 91 - 020 - 65001482 / 24690268.
(M) + 91 9028716622, + 91 99231 24949
Email : swastikpune@gmail.com
sales1swastik@gmail.com